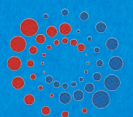


DS-63

Your mail management partner

Folder Inserter



Digital Mailing Solutions

Your mail management partner

An easy-to-use desktop folder inserter that can be used to process all your mail

The DS-63 is able to quickly and automatically process batch mailings such as invoice runs or direct marketing. This is achieved thanks to an easy-to-use graphic touch screen and highly developed ergonomics. Based on a tried and tested platform, it is 100% reliable, so your mail will be processed on time. Combined with our mail management software that features grouping, sorting and splitting capabilities, the DS-63 will help to optimise your mail flow and deliver significant cost savings.

- All in one mail management solution
- Graphic touch screen – for intuitive use
- Powerfold – for precise folding
- Flexfeed – to process each and every one
- Of your mail management applications
- Low noise level and compact size – to suit every work environment



Enhanced ease of use

The DS-63 is equipped with a graphic touch screen that makes it easy-to-use and allows applications stored in the memory to be accessed quickly. A step-by-step wizard allows all users to define settings for their applications and store them quickly in the memory.

The DS-63 is a model of ergonomic efficiency and its compact size and low noise level make it suitable for use in every working environment.

Maximum flexibility to suit your activity

The DS-63 is very versatile and can be configured in several different ways. The FlexFeed function allows you to process all document formats (inserts, reply forms and return envelopes).

Additionally, the “daily mail” function allows you to process mail that may contain a variable number of documents depending on the recipient (for example, invoices).



DMS mailroom solutions



Franking Machines -

1. Huge postal discounts
2. Improved efficiency
3. In line solution



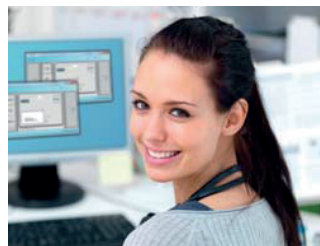
Output Management -

1. Ensure document integrity
2. Optimise workflow
3. Intelligent inserter controls



Address Hygiene -

1. Match your database against Royal Mail
2. Unlimited access to Royal Mail's PAF database
3. Access Royal Mail's best discounts



Integrated process

Combined with software solutions, the DS-63 can automate variable pages for document preparation thus avoiding manual handling and errors.

With our Insert'N Frank solution, you can automate your total mail flow by connecting the DS-63 to a franking system.

Maximum security

The DS-63 facilitates processing of mail that contains a variable number of documents such as invoices. The OMR scanner system allows you to automate the required number of documents to be inserted for each recipient and it stops the machine should the contents of a mail piece be incorrect. The DS-63 guarantees the integrity of your mail whatever the circumstances. Thanks to its PowerFold system, documents can be folded together for a professional-looking result. The DS-63 can neatly fold together up to five documents.

A choice of four configurations to cover all your mail management applications.



1 station



1.5 stations



2 stations



2.5 stations

Why choose DMS?

DMS make it easier to send and receive mail, email and SMS so you can connect better with your external and internal customers.

Our equipment and advanced software can help you reduce costs, grow your business, manage digital communications and comply with latest legislation.

We can assist with design, production and distribution of transactional and marketing mail. And when customers respond we make it simple to process, track and store documents and emails.

Our team of expert Account Managers will tailor solutions to meet your needs. An extensive support network of field engineers, contact centre and on-line tools are available to ensure our solutions keep delivering.

Commitment to the environment

The DS-65 carries the Eco Label and is compliant with environmental regulations. The automatic standby mode saves 50% on annual energy consumption and its low-weight, compact product design (25% lower than a comparable inserter) means a lower carbon footprint. Carbon footprint is also significantly reduced by the efficient packaging design which reduces transport volume and therefore the number of trucks and containers required.



Features & Benefits

Operational efficiency

Speed	Up to 2,200 envelopes/hour
Load'n Go automatic setting	Yes
FlexFeed multi-format feeder	Yes
Multiple sheet feeding	Yes
Number of feeders	Up to 2 x A4 + 1 insert feeder
PowerFold folding capacity	Yes (up to 5 sheets 80gsm)
Job memory	15
Colour touch screen	Yes
Job wizard assistance	Yes
Daily mail	Yes
Document feeder capacity	325
Envelope feeder capacity	150

Fold types	letter, zigzag, single, double parallel, no fold
------------	--

Different exits	optional catch tray, side exit
Document height	90-356 mm
Document width	130-230 mm
Document weight	60-250 gsm
Envelope length	90-162 mm
Envelope width	160-248 mm
Set thickness	2 mm
Tailor-made furniture	Optional

Mail Quality & Security

Secure 'n Feed double detection	Yes
Accumulate before folding	Yes
Optical Mark Recognition (OMR)	Optional
Tip to tip sealing	Yes

Budget Optimisation

Output management software OMS/VEM	Optional
Insert 'n Frank Franking system integration	Optional

Online Management (Online Services)

Remote assistance	Optional
New jobs upload	Optional
Preventive maintenance	Optional
Online diagnosis	Optional

System Specification

Dimensions (LxHxD)	1,200 x 520 x 420(mm)
Weight	75 kg



Digital Mailing Solutions

Digital Mailing Solutions Limited
 Kemp House,
 152-160 City Road
 London
 EC1V 2NX
 T: 020 3915 3913
 E: info@digitalmailingsolutions.co.uk
 www.digitalmailingsolutions.co.uk

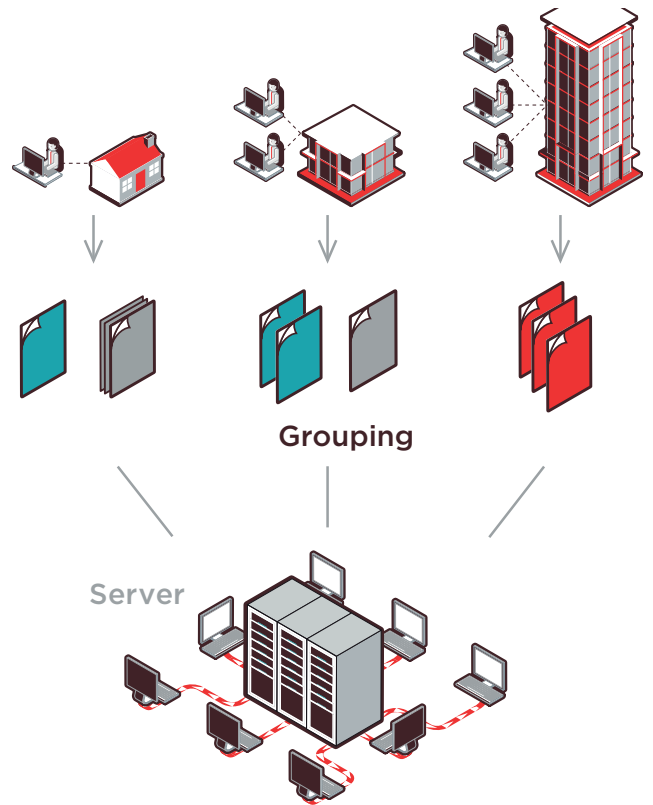
Save money with your DS-63 mail solution



Optimise your electronic document process with our **OMS software** and drastically reduce your postage expenses.

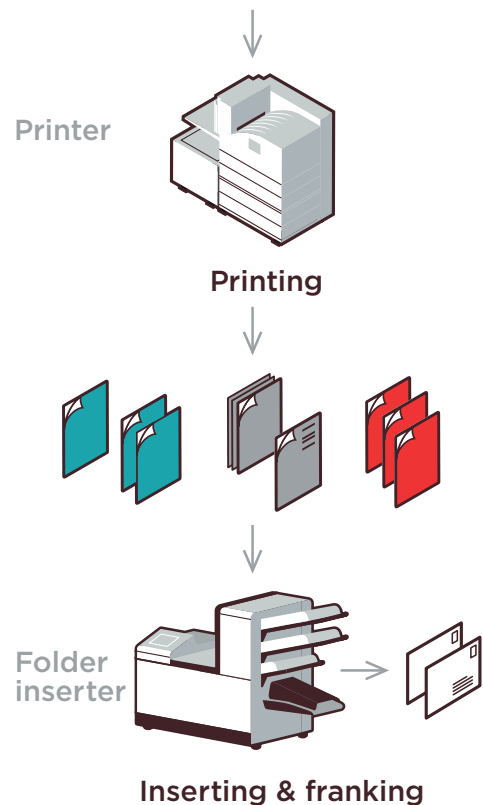
Integrate the DS-63 with a franking machine with our **insert'N frank solution**.

Add transpromotional documents for the same franking rate with our DS-63 **enhanced reading capabilities**.



Document management software solutions

- Compose the document
- Multicriteria Sort
- Group batches
- Optimize mail pieces according to postal constraints
- Manage personalized inserts
- Manage data quality
- Ensure security
- Add optical marks to drive the folder inserter automatically



Digital Mailing Solutions